

Luogo
Milano

Ingegnere strutturale
Marco Giuliani

Progetto architettonico
Frank Boehm
Enrico Molteni
Andrea Liverani

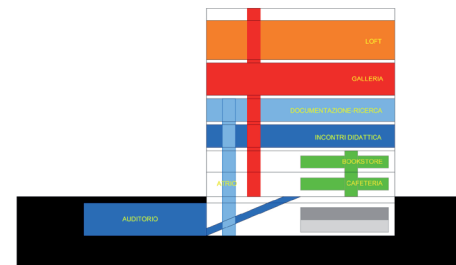
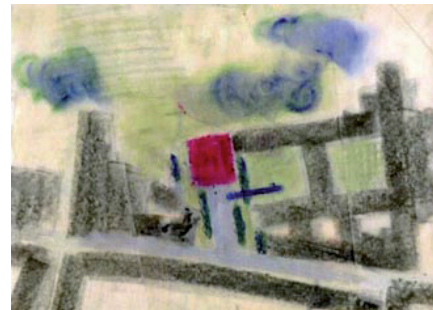
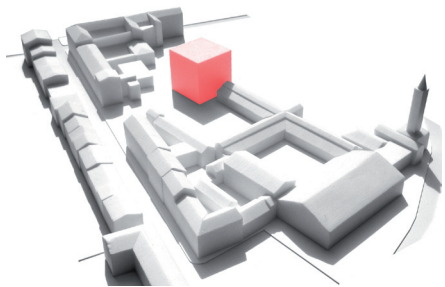
Ingegnere servizi
Gianfranco Ariatta

Architetto paesaggista
Marco Bay

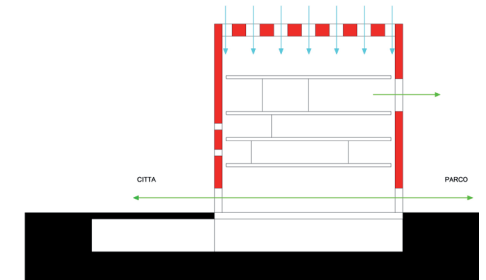
Dati dimensionali
Superficie 4500 mq

Architetti lighting designers
Metis: Marinella Pafetta, Claudio Val nt

Ente Banditore / Committente
Comune di Milano



PROGRAMMA



LUCE -VISTE

